

# TightLines Designs

creating great places to live



## Monique II

square footage. . . . . 1269 sq ft

bedrooms. . . . . 3

bathrooms. . . . . 2.5

stories. . . . . 2

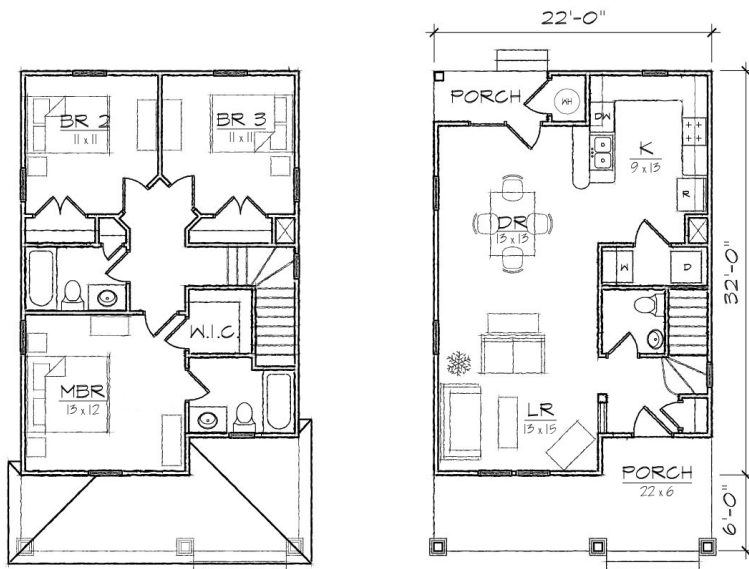
width. . . . . 22' 0"

depth. . . . . 38' 0"

1st floor ceiling height. . . . . 9' 0"

2nd floor ceiling height. . . . . 8' 0"

roof pitch. . . . . 8/12



This two story Queen Anne style house of 1269 square feet features a spacious living and dining room area and a private master bedroom suite with a walk-in closet. This open floor plan includes a total of three bedrooms, two full bathrooms and a powder room, a laundry room and U-shaped kitchen with a breakfast bar and opens to the dining room. The historically inspired exterior offers a main hip roof with a shingle accented front gable, a covered front and rear porch, and exterior storage room.

\*Contact us for more information on handicap, basement, garage, foundation, or framing modifications.