

# TightLines Designs

creating great places to live

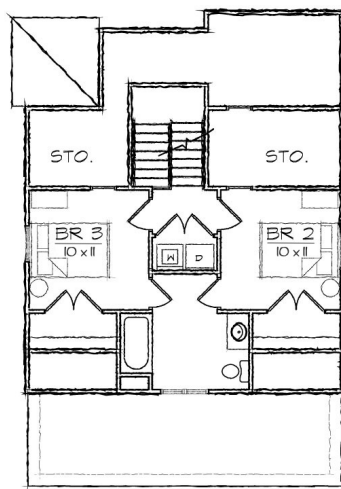


## Bailey I

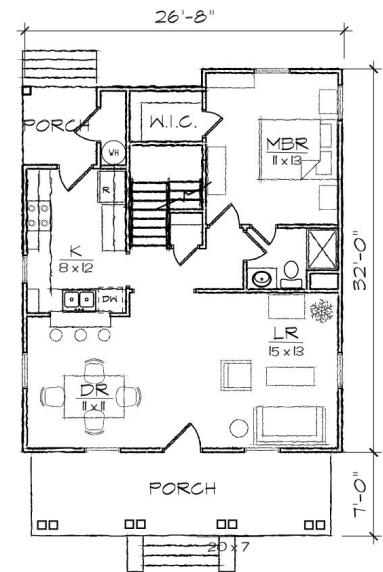
This one and one half story bungalow style home of 1187 square feet features a large open living and dining area and a first floor master bedroom suite. The plan includes a total of three bedrooms, two full bathrooms and an L-shaped galley kitchen with a breakfast bar that opens to the dining room. The second floor offers two bedrooms and a shared bathroom, the laundry area, and abundant easily accessible storage.

The Arts and Crafts inspired exterior offers a side to side gabled roof and a front gabled dormer, covered front and rear porches, and exterior storage room. At 26'-8", it is ideally suited for a narrow lot.

*Also available: Bailey II, Bailey III.  
Modifications available upon request.*



SECOND FLOOR



FIRST FLOOR

### Specifications

bedrooms: <b>3</b>	square footage: <b>1187</b>	roof pitch: <b>9/12</b>
bathrooms: <b>2</b>	1st floor ceiling: <b>9'</b>	width: <b>26' 8"</b>
stories: <b>2</b>	2nd floor ceiling: <b>8'</b>	depth: <b>39'</b>