

TightLines Designs

creating great places to live



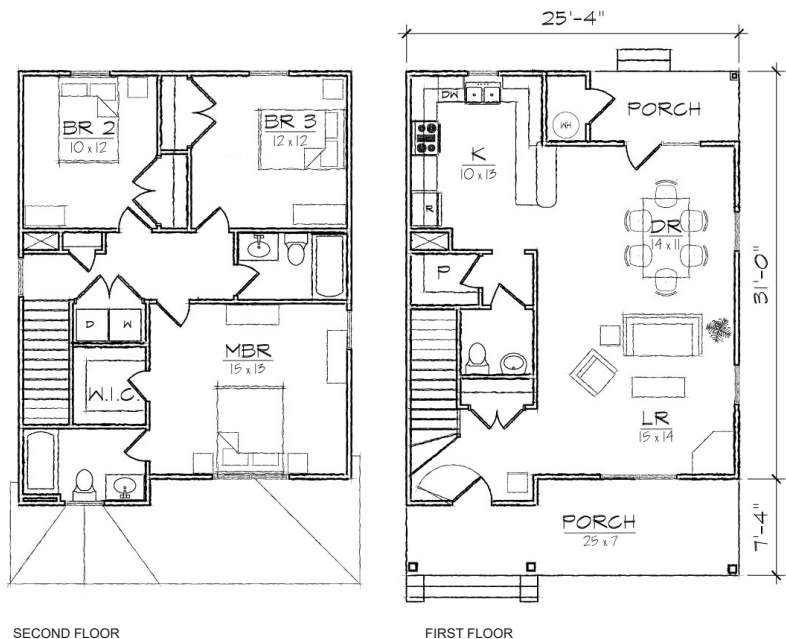
Fisher III

This two story turn of the century style house of 1483 square feet features a large open living and dining area, spacious kitchen, and a private master bedroom suite.

The plan includes a total of three bedrooms, two full bathrooms, a powder room, a laundry room, and a U-shaped kitchen with a breakfast bar that opens to the dining room.

The Queen Anne inspired exterior offers a hip roof, a full front porch with a hip roof and gabled entry, covered rear porch, and exterior storage room. At 25'4" in width, it is ideally suited for a narrow lot.

*Also available: Fisher I, Fisher II.
Modifications available upon request.*



Specifications

bedrooms: **3** square footage: **1483** roof pitch: **8/12**
bathrooms: **2.5** 1st floor ceiling: **9'** width: **25' 4"**
stories: **2** 2nd floor ceiling: **8'** depth: **38' 4"**