

TightLines Designs

creating great places to live



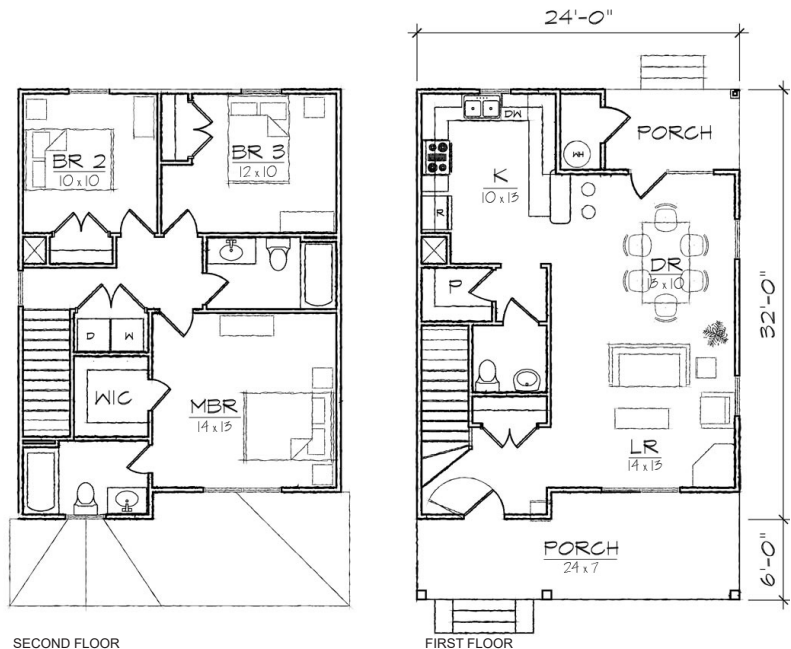
Fisher II

This two story turn of the century style house of 1352 square feet features a large open living and dining area, spacious kitchen, and a private master bedroom suite.

The plan includes a total of three bedrooms, two full bathrooms, a powder room, a laundry room, and a U-shaped kitchen with a breakfast bar that opens to the dining room.

The Queen Anne inspired exterior offers a hip roof, a full front porch with a hip roof and gabled entry, covered rear porch, and exterior storage room. At 24 ft in width, it is ideally suited for a narrow lot.

*Also available: Fisher I, Fisher III.
Modifications available upon request.*



Specifications

bedrooms: 3	square footage: 1352	roof pitch: 8/12
bathrooms: 2.5	1st floor ceiling: 9'	width: 24'
stories: 2	2nd floor ceiling: 8'	depth: 38'