

# TightLines Designs

creating great places to live



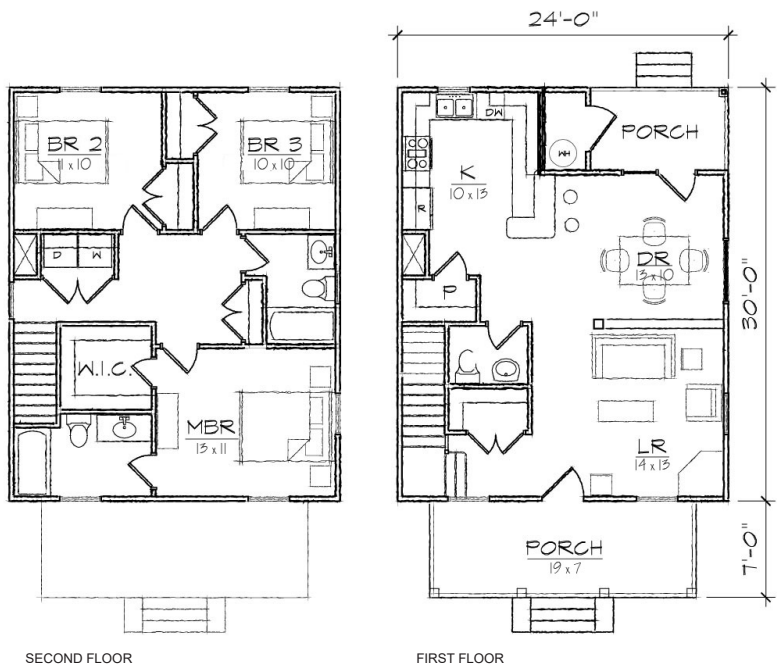
## Fitzgerald II

This two story Prairie style house of 1328 square feet features a large open living and dining area, spacious kitchen, and a private master bedroom suite.

The plan includes a total of three bedrooms, two full bathrooms, a powder room, a laundry room, and a U-shaped kitchen with a breakfast bar that opens to the dining room.

The Craftsman inspired exterior offers a clipped gable roof, a full front porch covered by a shed roof, a covered rear porch, and exterior storage room. At 24 ft in width it is ideally suited for a narrow lot.

*Also available: Fitzgerald I, Fitzgerald III.  
Modifications available upon request.*



### Specifications

bedrooms: <b>3</b>	square footage: <b>1328</b>	roof pitch: <b>8/12</b>
bathrooms: <b>2.5</b>	1st floor ceiling: <b>9'</b>	width: <b>24'</b>
stories: <b>2</b>	2nd floor ceiling: <b>8'</b>	depth: <b>37'</b>