

TightLines Designs

creating great places to live



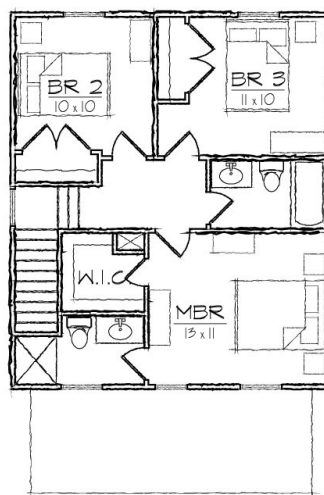
Fitzgerald I

This two story Prairie style house of 1169 square feet features a large open living and dining area, spacious kitchen, and a private master bedroom suite.

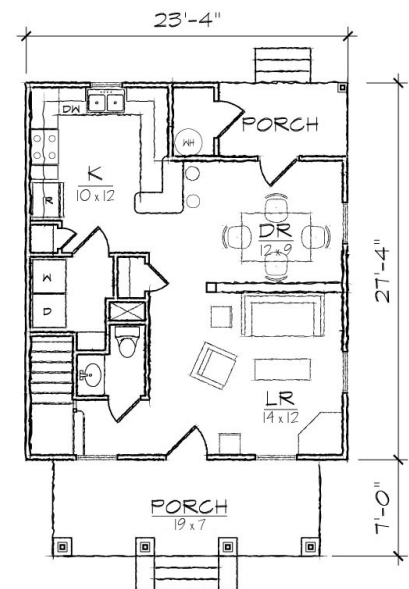
The plan includes a total of three bedrooms, two full bathrooms, a powder room, a laundry room, and a U-shaped kitchen with a breakfast bar that opens to the dining room.

The Craftsman inspired exterior offers a clipped gable roof, a full front porch covered by a shed roof, a covered rear porch, and exterior storage room. At 23'-4" in width it is ideally suited for a narrow lot.

*Also available: Fitzgerald II, Fitzgerald III.
Modifications available upon request.*



SECOND FLOOR



FIRST FLOOR

Specifications

bedrooms: 3	square footage: 1169	roof pitch: 8/12
bathrooms: 2.5	1st floor ceiling: 9'	width: 23' 4"
stories: 2	2nd floor ceiling: 8'	depth: 34' 4"