

# TightLines Designs

creating great places to live



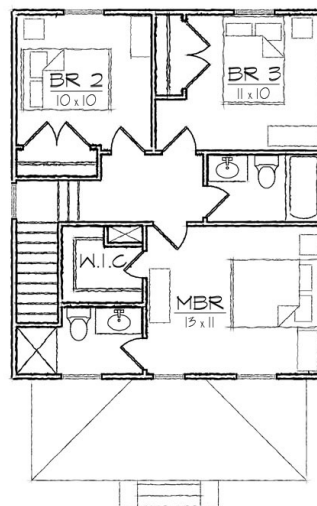
## Four Square I

This classic two story Prairie style house of 1158 square feet features a large open living and dining area, spacious kitchen, and a private master bedroom suite.

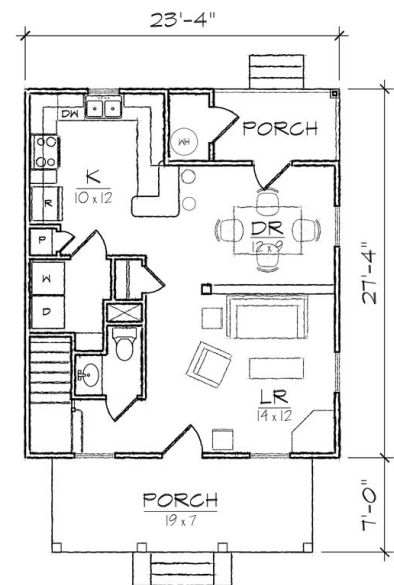
The plan includes a total of three bedrooms, two full bathrooms, a laundry room, a powder room, and a U-shaped kitchen with a breakfast bar that opens to the dining room.

The Craftsman inspired exterior offers a hip roof with a dormer, a full front porch covered with a hip roof, a covered rear porch, and exterior storage room. At 23'-4" in width it is ideally suited for a narrow lot.

Also available: Four Square II, Four Square III.  
Modifications available upon request.



SECOND FLOOR



FIRST FLOOR

### Specifications

bedrooms: <b>3</b>	square footage: <b>1158</b>	roof pitch: <b>8/12</b>
bathrooms: <b>2</b>	1st floor ceiling: <b>9'</b>	width: <b>23' 4"</b>
stories: <b>2</b>	2nd floor ceiling: <b>8'</b>	depth: <b>34' 4"</b>