



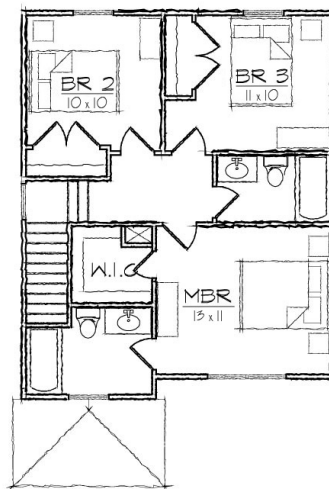
Fredrick I

This two story turn of the century style house of 1189 square feet features a large open living and dining area, a spacious kitchen, and a private master bedroom suite.

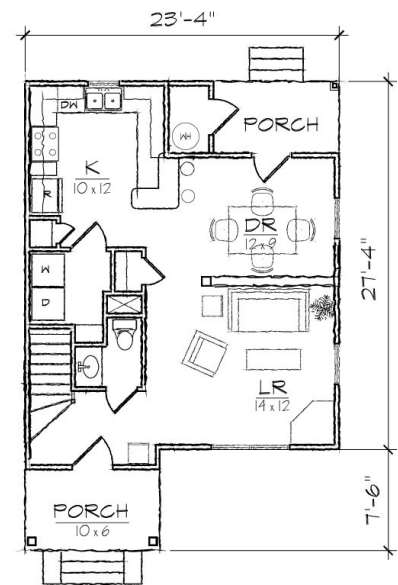
The plan includes a total of three bedrooms, two full bathrooms, a laundry room, a powder room and U-shaped kitchen with a breakfast bar that opens to the dining room.

The Queen Anne inspired exterior offers a dutch gable roof, a covered front porch with a hip roof, covered rear porch, and exterior storage room. At 23'-4" in width it is ideally suited for a narrow lot.

*Also available: Fredrick II, Fredrick III.
Modifications available upon request.*



SECOND FLOOR



FIRST FLOOR

Specifications

bedrooms: **3** square footage: **1189** roof pitch: **8/12**
 bathrooms: **2.5** 1st floor ceiling: **9'** width: **23' 4"**
 stories: **2** 2nd floor ceiling: **8'** depth: **34' 10"**