

# TightLines Designs

creating great places to live



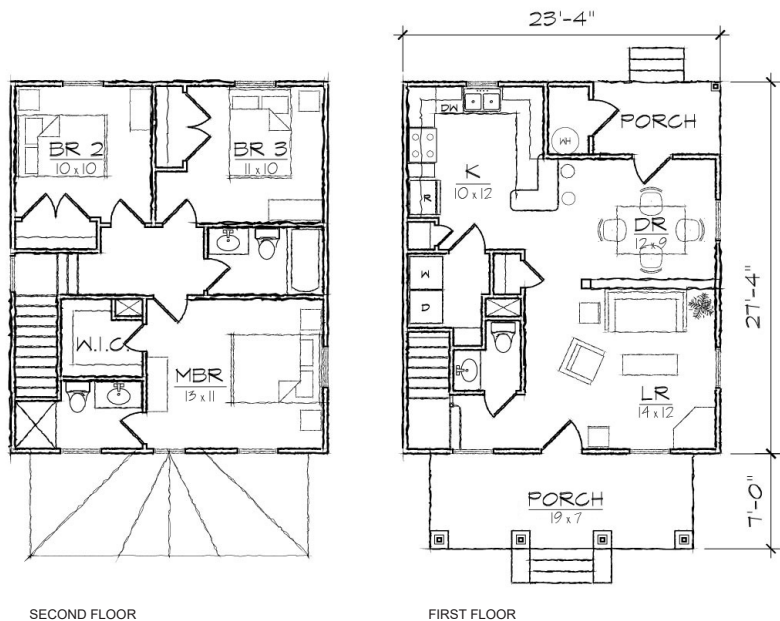
## Fulton I

This two story Prairie style house of 1166 square feet features a large open living and dining area, spacious kitchen, and private master bedroom suite.

The plan includes a total of three bedrooms, two full bathrooms, a laundry room, a powder room, and U-shaped kitchen with a breakfast bar that opens to the dining room.

The Craftsman inspired exterior offers a gable roof with an accent of shingles, a full front porch covered with a hip roof and gabled entry, covered rear porch, and exterior storage room. At 23'-4" in width, it is ideally suited for a narrow lot.

*Also available: Fulton II, Fulton III.  
Modifications available upon request.*



### Specifications

bedrooms: **3** square footage: **1166** roof pitch: **8/12**  
 bathrooms: **2.5** 1st floor ceiling: **9'** width: **23' 4"**  
 stories: **2** 2nd floor ceiling: **8'** depth: **34' 4"**