

TightLines Designs

creating great places to live



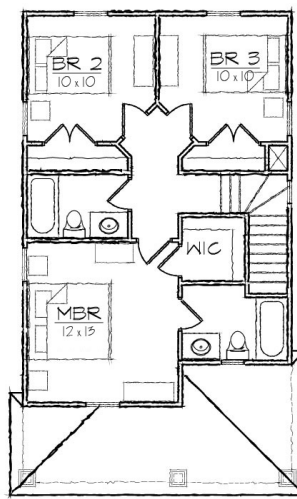
Monique I

This two story Queen Anne style house of 1188 square feet features a spacious living and dining room area and a private master bedroom suite with a walk-in closet.

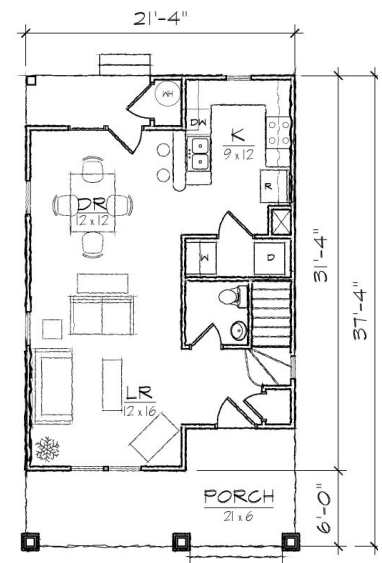
This open floor plan includes a total of three bedrooms, two full bathrooms, a powder room, a laundry room, and U-shaped kitchen with a breakfast bar that opens to the dining room.

The historically inspired exterior offers a main hip roof with a shingle accented front gable, covered front and rear porches, and exterior storage room. At 21'-4" in width it is ideally suited for a narrow lot.

*Also available: Monique II, Monique III.
Modifications available upon request.*



SECOND FLOOR



FIRST FLOOR

Specifications

bedrooms: 3	square footage: 1188	roof pitch: 8/12
bathrooms: 2.5	1st floor ceiling: 9'	width: 21' 4"
stories: 2	2nd floor ceiling: 8'	depth: 37' 4"