

Nowell Duplex

This two story Prairie style duplex offers two units of 1148 square feet. Each unit features a large open living room, spacious kitchen and dining space, and a private master bedroom suite on the first floor.

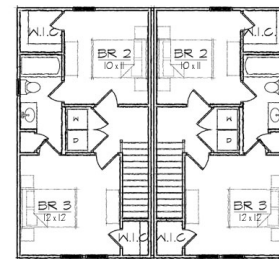
Both plans offer a total of three bedrooms, two full bathrooms, a laundry area, and U-shaped kitchen that opens to the dining room.

The Craftsman inspired exterior offers a shared full front porch covered with a hip roof with gable entry, and separate side deck entries.

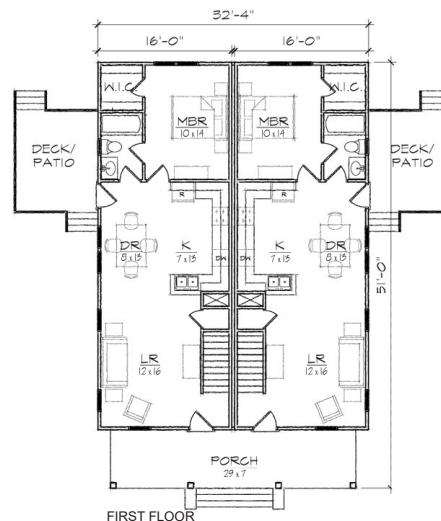
Modifications available upon request.

Specifications

bedrooms: 3	square footage: 2296	roof pitch: 8/12
bathrooms: 2	1st floor ceiling: 9'	width: 32' 4"
stories: 2	2nd floor ceiling: 8'	depth: 51'



SECOND FLOOR



FIRST FLOOR