

TightLines Designs

creating great places to live



Whitney I

This single story Folk Victorian style house of 1088 square feet features a spacious living room, separate dining area, and a private master bedroom suite with double closets.

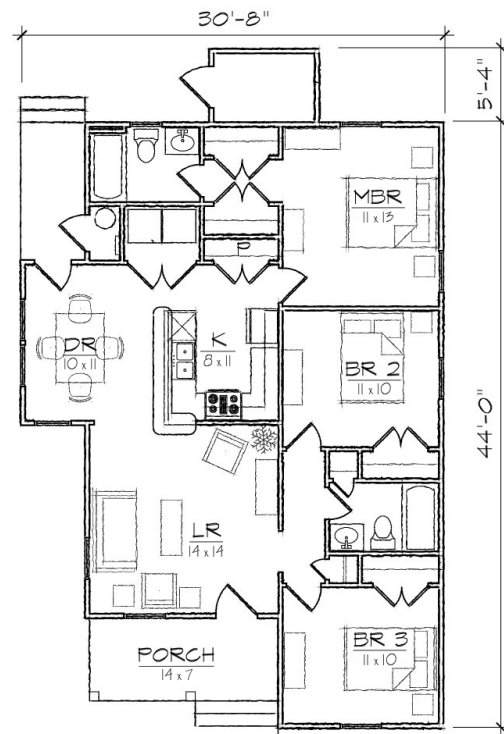
This open floor plan includes a total of three bedrooms, two full bathrooms, laundry area, and centralized U-shaped kitchen with a breakfast bar that opens to the dining room.

The historically inspired exterior offers a double gable roof with a side gable, covered front and rear porches, and exterior storage room.

*Also available: Whitney 2BR, Whitney II, Whitney III.
Modifications available upon request.*

Specifications

bedrooms: 3	square footage: 1088	roof pitch: 8/12
bathrooms: 2	1st floor ceiling: 9'	width: 30' 8"
stories: 1		depth: 44'



FLOOR PLAN