

# TightLines Designs

creating great places to live



## Winslow 2BR

This single story Folk Victorian style house of 964 square feet features a spacious living room and a separate dining area.

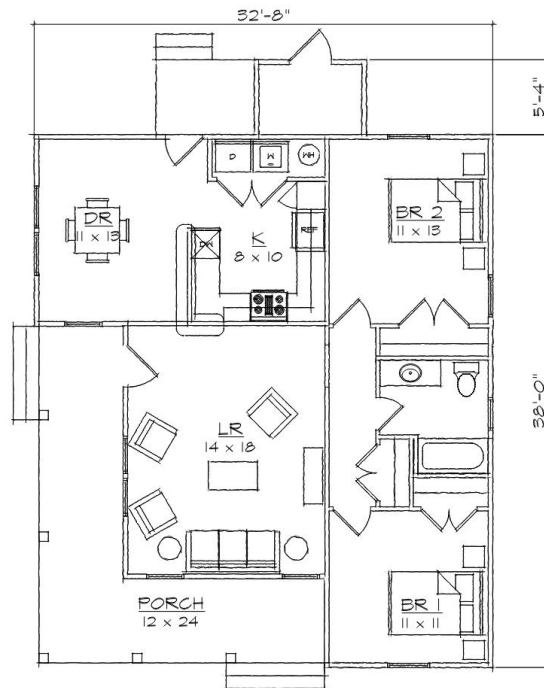
This open floor plan includes a total of two bedrooms, one full bathroom, laundry area, and centralized U-shaped kitchen with a breakfast bar that opens to the dining room.

The historically inspired exterior offers a double gable roof with a side gable, wrap around front porch, covered rear porch, and exterior storage room.

*Also available: Winslow I, Winslow II, Winslow III.  
Modifications available upon request.*

### Specifications

bedrooms: <b>2</b>	square footage: <b>964</b>	roof pitch: <b>8/12</b>
bathrooms: <b>1</b>	1st floor ceiling: <b>9'</b>	width: <b>32' 8"</b>
stories: <b>1</b>		depth: <b>38'</b>



FLOOR PLAN