

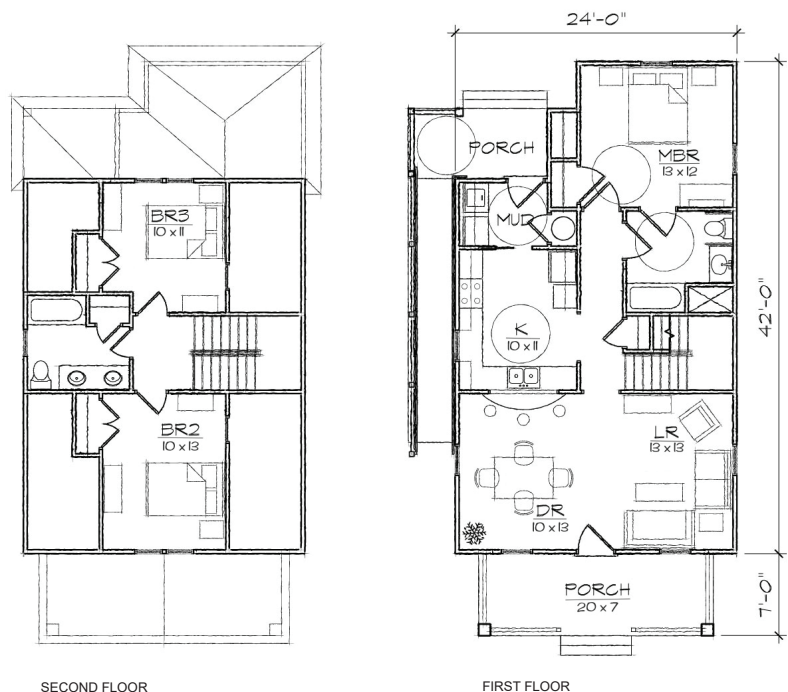


Ansley II Accessible

This one and one half story bungalow style home of 1332 square feet has been designed to accommodate a resident with accessible needs throughout the main floor. It features a large open living area and an L-shaped galley kitchen with a breakfast bar that opens to the dining room. It includes a first floor master bedroom suite, two upstairs bedrooms, two full bathrooms, and a laundry/mud room. The second floor also contains abundant easily accessible storage.

The Arts and Crafts inspired exterior offers a front gabled roof and covered front and rear porches. At 24' in width, it is ideally suited for a narrow lot.

Also available: *Ansley I, Ansley II, Ansley III.*
 Modifications available upon request.



Specifications

bedrooms: 3	square footage: 1332	roof pitch: 12/12
bathrooms: 2	1st floor ceiling: 9'	width: 24'
stories: 2	2nd floor ceiling: 8'	depth: 49'