

TightLines Designs

creating great places to live



Hinton I

This classic single story bungalow style house of 1121 square feet features a large living and dining area with optional trayed ceilings and a private master bedroom suite.

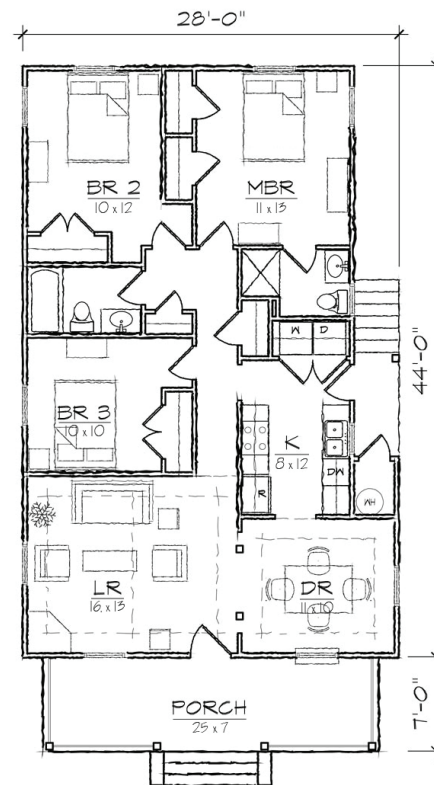
The plan includes a total of three bedrooms, two full bathrooms, a laundry area, and a centralized kitchen that opens to the dining room.

The Craftsman inspired exterior offers a simple gabled roof, covered full front porch, covered side porch, and exterior storage room.

Modifications available upon request.

Specifications

bedrooms: 3	square footage: 1121	roof pitch: 7/12
bathrooms: 2	1st floor ceiling: 9'	width: 28'
stories: 1	2nd floor ceiling: 8'	depth: 51'



FLOOR PLAN